



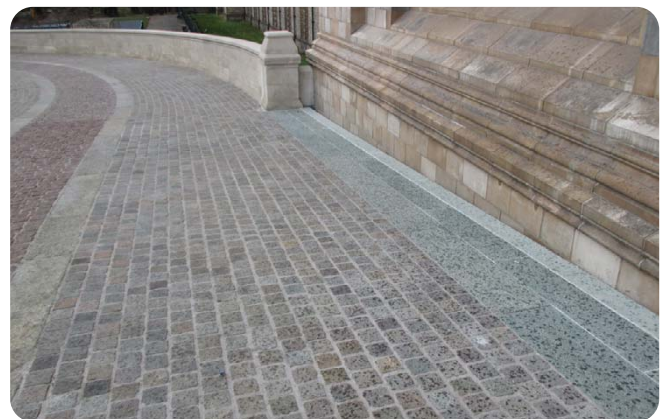
© Trustees of the Natural History Museum, London [2018]. All rights reserved.

The Natural History Museum, Kensington, London

Natural choice for museum project.

A combination of BS7533-compliant hard landscaping materials from Parex was specified for a major new scheme at the main public entrance to the Natural History Museum in London.

The area in Cromwell Road has been redesigned to a high specification with natural Yorkstone paving and porphyry granite setts in a scheme carried out by Blakedown Landscapes (SE) Ltd, of Woking.



The Parex BS7533-compliant system was put forward to the client by Wilder Associates Landscape Architects who were acting as technical advisers on the project in association with the Landscape Architect Kim Wilkie and Niall McLaughlin Architects.

The specification of Parex materials followed the construction of sample panels on site. The scheme took into account the need not only to withstand constant daytime foot traffic, but also occasional use by heavy vehicular traffic movements during deliveries of exhibits and the visits of broadcast crews.

Five different materials from the Parex Streetscape range were selected for the project with Fine Bedding Concrete supplied in bulk bags for the base, Parex Bond Plus applied as a slurry to strengthen the bond between the stone slabs and setts and Parex Granatech Natural used for jointing the newly-laid areas.



CASE STUDY: Streetscape & Façade Mortars

PAREX

A SIKA COMPANY



© Trustees of the Natural History Museum, London [2018]. All rights reserved.



Clients:

The Natural History
Museum

Hard Landscaping Contractor:

John Graham
Construction, Leeds,
West Yorkshire

Technical Advisers:

LDN Architects, Edinburgh

PAREX MATERIALS USED (BS7533 compliant)

Bedding: Fine Bedding Concrete

Bonding: Parex Bond Plus

Jointing: Granatech (Fine)

Fixing kerbstones: Parex Kerbfix

Pointing & jointing: Parex Standard gun-injected mortar

Following the construction of the sample panels, the Granatech was modified to a “fine” mix by modifying the formula to create a smoother finish, which was selected as the preferred option by the client.

Parex Kerbfix high strength polyester mortar was also used for the fixing of kerbstones, while Parex Standard gun-injected mortar was used for pointing the kerbs and step sections.

The newly paved entrance features Yorkstone to complement the original terracotta construction of the museum which was completed in 1880, while the Porphyry granite setts have been laid to a crescent effect which signposts the pedestrian route to the main entrance of the building.

Blakedown Landscapes were selected as the contractor following on from previously completing the Darwin Centre external courtyard project at the museum back in 2009.

